

Accessori Accessories



Adattatori per alberino

Modello	
----------------	--

3834-ADP



Alberi per seghe a Tazza

Accessories for hole saws

Modello	
----------------	--

AM 930

Albero per seghe 14 ÷ 30 mm

AM 9100

Albero per seghe 32 ÷ 105 mm

AM 9101

Albero per seghe 32 ÷ 105 mm senza blocco

Seghe a Tazza per spine a centrare

Hole saws for centering pins

Ø derivazione	Ø sega
20	14
25	17
32	22
40	29
50	35
63	41

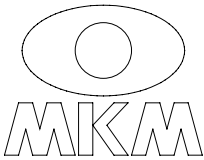


Seghe a tazza per raggatura raccordi

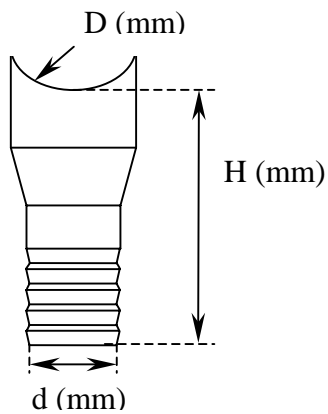
Ø sega
32
40
51
64
76
89

Seghe a tazza per apertura fori su prese di scarico

Ø derivazione	Ø sega
40.33	33
50.43	43
63.54	54

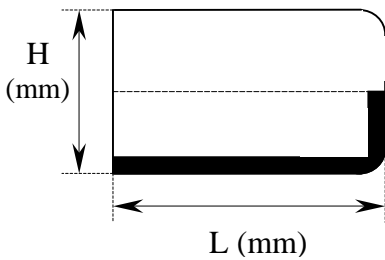


Accessori Accessories



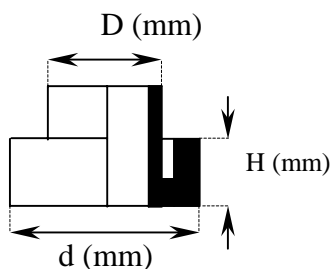
Raccordi di derivazione per tubo corrugato PN 10
Tee derivations fittings for spiral tube PN 10
Rohrabzweigungen herzustellen PN 10
Raccords en dérivation pour toujon anelé PN 10

d	D	H
20	32	61
20	40	61
20	50	61
20	63	61
20	75	61
20	90	61



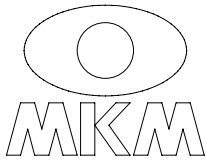
Calotta PN 10
Cap PN 10
Kappe PN 10
Bouchon femelle PN 10

H	L
20	54
25	54
32	54
40	54

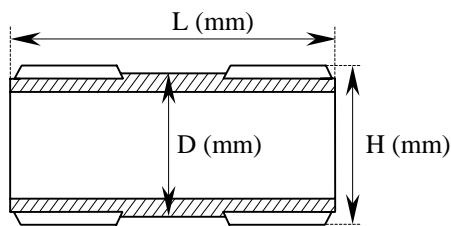


Guarnizioni per tubo corrugato
Gasket for spiral tube
Flaschdichtring
Joint pour toujon anelé

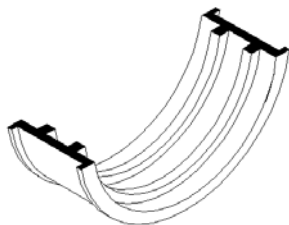
d	D	H
21	32	21



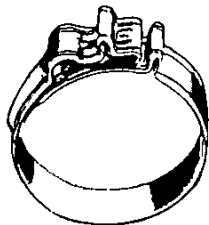
Accessori Accessories



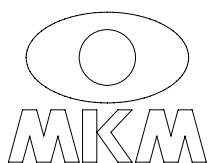
Nippli PN 10 Barrel Nipples PN 10 Doppelnippel PN 10 Mamelon double PN 10			
D	L	H	
½"	56	20	
¾"	60	25	
1"	68	32	



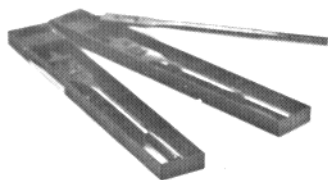
Semianelli reggi-fascetta inox per tubo corrugato Half-rings inx-ring holders for spiral tube		
Qty	D	
2	25	



Fascetta inox di tenuta per tubo corrugato a bloccaggio rapido Inox ring for holding spiral tube with a quick setup		
Qty	Circonferenza di tenuta	
1	30.5-32.0	



Accessori Accessories



Punte a Mecchia		
Center bits		
Modello	Ø	

MM 14	14
MM 18	18



Cesoie	
Tube cutters	
Modello	

P 38.20



Raschietto	
Scraper	
Modello	

M 440
M 442
Lame di ricambio (10 pz.)



Carta vetrata	
Brushes for files	
Modello	

M 404
M 412
Lame di ricambio autoadesiva (2 pz.)



Sbavatori	
Deburring tools	
Modello	

SB 10
Sbavatore universale fornito di punta di ricambio